

EUROPEAN SOCIETY OF THORACIC IMAGING

14th Annual Meeting, Prague

June 9–11, 2006

www.esti2006.org



www.esti-society.org



Second Announcement

► *plus:* Joint Workshop ESTI/ESCR , Basics of Cardiac Imaging by CT and MR, June 11-12, 2006 ►

ACKNOWLEDGEMENTS

The Organising Committee would like to express its most sincere gratitude to all those who are generously contributing to the success of the ESTI 14th Annual Meeting in Prague 2006.

Gold medal sponsor:



Silver medal sponsor:



The meeting is also supported by:





CONTENTS

WELCOME ADDRESS	2
COMMITTEES	3
IMPORTANT ADDRESSES	5
IMPORTANT DATES TO REMEMBER	6
PROGRAMME AT A GLANCE	7
SCIENTIFIC PROGRAMME	8
LIST OF INVITED SPEAKERS	12
CALL FOR ABSTRACTS	12
GENERAL INFORMATION	
Meeting Dates	14
Meeting Venue	14
Official Meeting Language	15
Sponsors and Exhibition	16
Prague and Czech Republic	16
REGISTRATION	20
ACCOMMODATION	24
SOCIAL PROGRAMME	30
GUIDED TOURS	31
plus:	
WORKSHOP	
General Information	36
Scientific Programme	37



EUROPEAN SOCIETY OF THORACIC IMAGING

14th Annual Meeting, Prague, June 9 – 11, 2006

WELCOME ADDRESS

Dear Colleagues and Friends,

On behalf of the Local Organising Committee and on behalf of the European Society of Thoracic Imaging I would like to warmly invite you to the 14th Annual Meeting of the ESTI which will be held on June 9–11, 2006 in Prague, Czech Republic. It will foster scientific activities related to diagnoses of diseases of pulmonary parenchyma, great vessel of thorax, mediastinal diseases and diseases of the heart. The conference will stimulate exchange of information among scientists and clinical specialists.

We are delighted to announce a programme that will cover the whole range of the above mentioned topics. The meeting will feature basic and advanced postgraduate courses, delivered by renowned and outstanding speakers from Europe and distinguished colleagues from the USA. Selected proffered papers will provide an overview of the current trends in research.

The technical exhibit will provide up to date overview of the state of art of different imaging modalities and their latest technical developments.

Besides all this, we invite you to see old friends and meet new colleagues in the historic atmosphere of Prague, a great city of charm and culture.

I am looking forward to meeting you at the 14th ESTI Annual Meeting in Prague!

Friendly regards,

Jiří Neuwirth

President of ESTI 2006

COMMITTEES

ESTI 2005/2006 COUNCIL

President:	J. Neuwirth
Past president:	D. Hansell
President elect:	K. Malagari
First vice president:	P. Grenier
Second vice president:	J. Vilar
Secretary:	D. Tack
Treasurer:	N. Howarth
Councillors:	C. Schaefer-Prokop F. Laurent
Bylaw committee:	P. Vock M. Prokop A. Mester
Jury committee:	S. Desai E. Coche
Programme committee:	F. Gleeson T. Franquet M. Storto
Electronic media committee:	A. Bankier S. Desai B. Ghaye
Committee for industry relationship:	P. Schnyder J. Verschakelen L. Bonomo C. Beigelman
Strategic committee:	L. Bonomo J. Mata C. Herold S. Diederich
Training and educational committee:	J. Verschakelen A. Bankier D. Hansell H. U. Kauzcor



EUROPEAN SOCIETY OF THORACIC IMAGING

14th Annual Meeting, Prague, June 9 – 11, 2006

LOCAL ORGANISING COMMITTEE

MUDr. Theodor Adla	theodor.adla@lfmotol.cuni.cz	+420 224 438 101
prof. MUDr. Pavel Eliáš, CSc.	pavel.elias-md@seznam.cz	+420 495 832 260
doc. MUDr. Miroslav Heřman, PH. D.	herman@fnol.cz	+420 588 443 495
MUDr. Jaroslav Štrof, CSc., MBA	strof@yahoo.com	+420 224 972 611
MUDr. Vojtěch Suchánek	vojtech.suchanek@voslogin.net	+420 224 438 101
Isabella Vierecklova	vierecklova@seznam.cz	+420 224 438 101

IMPORTANT ADDRESSES

President of the Meeting **prof. Jiří Neuwirth PhD**
Clinic of Imaging Methods, FN Motol
Charles University Prague
The IInd Faculty of Medicine
V úvalu 84
CZ – 150 06 Prague 5
Czech Republic

Phone +420 224 438 100
GSM +420 602 387 457
Fax +420 224 438 120
E-mail jiri.neuwirth@lfmotol.cuni.cz

President of the Scientific Programme Committee **Fergus Gleeson MD FRCP, FRCR, MB BS**
Department of Radiology
Churchill Hospital
Oxford Radcliffe Hospitals, Old Rd
Headington
Oxford OX3 7LJ
England

E-mail Fergus.gleeson@radiology.oxford.ac.uk
E-mail radi0003@herald.ox.ac.uk

Conference Secretariat **Lukáš Mareček**
CZECH-IN s. r. o.
Prague Congress Centre
5. května 65
CZ – 140 21 Prague 4
Czech Republic

Phone +420 261 174 304
GSM +420 777 791 173
Fax +420 261 174 307
E-mail esti@esti2006.cz
info@esti2006.cz



Professional Events Congress Organiser





EUROPEAN SOCIETY OF THORACIC IMAGING

14th Annual Meeting, Prague, June 9 – 11, 2006

IMPORTANT DATES TO REMEMBER

- March 8, 2006 Deadline for early accommodation
- March 31, 2006 Deadline for abstract submission
- March 31, 2006 Deadline for early registration fee
- May 1, 2006 Deadline for accommodation
- June 9–11, 2006 14th ESTI Annual Meeting
- plus:
June 11–12, 2006 Joint Workshop ESTI/ESCR

PROGRAMME AT A GLANCE

Please note that the programme outlined in this announcement is preliminary and may be subjected to change. The programme would be modified according to the actual situation.

Friday – June 9, 2006:	Saturday – June 10, 2006:	Sunday – June 11, 2006:	Monday – June 12, 2006:
8:00–9:00 Scientific session: Lung Cancer	8:00–9:20 Scientific session: HRTC of Interstitial Lung Disease	8:00–9:00 Scientific session: Multislice CT	8:00–10:00 Cardiac Pathology I: Non-ischemic Myocardial Disease
9:00–9:30 Coffee	9:20–9:50 Coffee	9:00–10:00 Scientific sessions: Functional Lung Imaging	10:00–10:30 Coffee
9:30–10:00 Presidential Award and Honorary Lecture L. Bonomo	9:50–10:50 Scientific session: Pulmonary Embolic Disease	10:00–10:30 Coffee	10:30–12:00 Cardiac Pathology II: Coronary Atherosclerosis, Ischemic Heart Disease
10:00–11:00 Scientific session: Pulmonary Nodules	10:50–11:50 Film reading session	10:30–11:30 ESTI business meeting	12:00–13:00 Lunch satellite sessions
11:00–12:20 Scientific session: Cardiac and Vascular Imaging	12:00–13:30 Lunch satellite sessions	12:00–13:30 Lunch satellite sessions	13:00–15:00 Case Analysis, Clinical Reporting, Communication with Cardiologist
12:30–14:00 Lunch satellite sessions	13:30–15:30 Scientific proffered papers in two parallel session	Joint Workshop ESTI/ESCR	
14:00–16:00 Scientific proffered papers in two parallel session	15:30–16:00 Coffee	14:00–15:30 Cardiac and Coronary Anatomy and Physiology	
16:00–16:30 Coffee	16:00–17:40 Parallel scientific sessions: 16:00–17:00 Smoking Related Lung Disease 16:00–17:00 Infection 17:00–17:40 Mediastinal and Pleural Disease	15:30–16:30 Coffee	
16:30–18:00 Parallel Scientific sessions: 16:30–17:30 Thoracic Intervention 16:30–18:00 Imaging of Critically Ill Patient	17:00–17:40 Thoracic Manifestations of Extrathoracic Disease	16:00–18:00 Optimisation and Standards of Cardiac imaging (MR, MDCT)	

WORKSHOP



SCIENTIFIC PROGRAMME



Friday June 9, 2006

Lung Cancer – Moderator – B. Ghaye

- 8:00 – 8:20 Lung Cancer Screening, current European status S. Diederich
- 8:20 – 8:40 CT and MRI in Lung Cancer staging J. Vilar
- 8:40 – 9:00 PET-CT in Lung Cancer Staging J. Prior

Coffee

9:30 – 9:40 Presidential Award – L. Bonomo

9:40 – 10:00 Honorary Lecture – L. Bonomo

Pulmonary Nodules – Moderator – S. Padley

- 10:00 – 10:20 The Use of CAD in Chest CT M. – P. Revel
- 10:20 – 10:40 What to do with Incidentally Found Pulmonary nodules C. Herold
- 10:40 – 11:00 Lung Nodules in Patients with Extrathoracic Malignancy S. Desai

Cardiac and Vascular Imaging – Moderator – E. van Beek

- 11:00 – 11:20 CT of the Heart from Electron Beam to Multislice CT R. Rienmuller, J. Mata
- 11:20 – 11:40 From Science to Practice in Cardiovascular CT J. Schoepf
- 11:40 – 12:00 The Current Role of MRI in Cardiovascular Imaging J. Bogaert
- 12:00 – 12:20 The use of Contrast Media in Cardiovascular Imaging M. Prokop

Lunch **12:30 – 14:00 Satellite sessions**

- 14:00 – 16:00 **Scientific proffered papers in two parallel sessions**

Coffee

Parallel Sessions with Invited Speakers

Thoracic Intervention – Moderator – S. Copley

- 16:30 – 16:50 Lung biopsy N. Howarth
- 16:50 – 17:10 Pleural intervention F. Gleeson
- 17:10 – 17:30 Radiofrequency Ablation of thoracic tumours K. Steinke

Imaging of the Critically Ill Patient – Moderator – S. Diederich

- 16:30 – 16:50 Imaging of chest trauma P. Schnyder
- 16:50 – 17:30 Imaging of acute chest pain J. Ferda, P. Costello
- 17:30 – 18:00 Imaging of the ICU patient M. Heřman



Saturday June 10, 2006

Scientific session – Invited Speakers

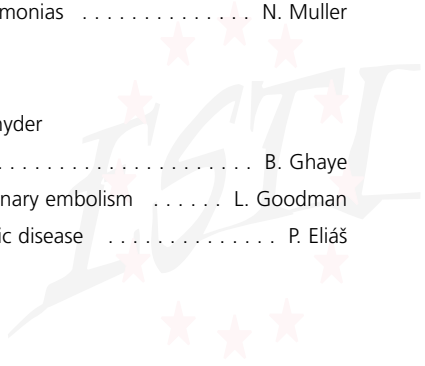
HRCT of Interstitial Lung Disease – Moderator – S. Desai

- 8:00 – 8:20 The Use of the Reticular Pattern in Diagnosis M. Storto
- 8:20 – 8:40 The Use of the Nodular Pattern in Diagnosis C. Beigelman
- 8:40 – 9:00 Borderlands of normal D. Hansell
- 9:00 – 9:20 Differentiating the interstitial pneumonias N. Muller

Coffee

Pulmonary Embolic Disease – Moderator – P. Schnyder

- 9:50 – 10:10 When to image B. Ghaye
- 10:10 – 10:30 Imaging of suspected acute pulmonary embolism L. Goodman
- 10:30 – 10:50 Imaging of chronic thromboembolic disease P. Eliáš





EUROPEAN SOCIETY OF THORACIC IMAGING

14th Annual Meeting, Prague, June 9 – 11, 2006

Film Reading Session – Moderator – F. Gleeson, J. Vershakelen

- 10:50 – 11:50 N. Muller, L. Goodman, M. Maffesanti, S. Ellis

Lunch 12:30 – 13:30 **Satellite sessions**

- 13:30 – 15:30 **Scientific Proffered Papers in Two Parallel Sessions**

Coffee

Parallel sessions with Invited Speakers

Smoking related lung disease – Moderator – D. Hansell

- 16:00 – 16:20 Airway Disease in Smokers J. Verschakelen
- 16:20 – 16:40 Whats' new in Emphysema – Perspectives and Challenges A. Bankier
- 16:40 – 17:00 Smoking related interstitial lung disease A. Oikonomou

Infection – Moderator – A. Bankier

- 16:00 – 16:20 Viral Infection in the Lungs: Radiologic-Pathologic Correlation T. Franquet
- 16:20 – 16:40 Infection in AIDS and the immunocompromised patient S. Padley
- 16:40 – 17:00 Community acquired and nosocomial infection M. Mirka

Mediastinal and Pleural disease – Moderator – D. Wormanns

- 17:00 – 17:20 Investigation of suspected mediastinal tumours K. Malagari
- 17:20 – 17:40 Investigation of suspected pleural malignancy S. Copley

Thoracic Manifestations of Extrathoracic disease – Moderator – P. Vock

- 17:00 – 17:20 Pulmonary Manifestations of Vasculitis and Connective Diseases E. Coche
- 17:20 – 17:40 Drug induced lung disease C. Schaefer-Prokop



Sunday June 11, 2006

Scientific session – Invited Speakers

Multislice CT – Moderator – C. Herold

- 8:00 – 8:20 Protocol optimisation D. Wormanns
- 8:20 – 8:40 Dose reduction D. Tack
- 8:40 – 9:00 The clinical utility of post-processing P. Vock

Functional Lung Imaging – Moderator – M. Prokop

- 9:00 – 9:20 Functional Insights into Pulmonary Function using CT P. Grenier
- 9:20 – 9:40 Perfusion MRI of the Lungs S. Ley
- 9:40 – 10:00 Clinical Hyperpolarised 3-Helium MRI of the Lung E. van Beek

Coffee

- 10:30 – 11:30 Scientific sessions

ESTI Business Meeting

End of Meeting





EUROPEAN SOCIETY OF THORACIC IMAGING

14th Annual Meeting, Prague, June 9 – 11, 2006

LIST OF INVITED SPEAKERS

Invited speakers for ESTI Meeting

A. Bankier	Austria	M. Heřman	Czech Republic	M. Storto	Italy
C. Beigelmann-Aubry	France	C. Herold	Austria	D. Tack	Belgium
J. Bogaert	Belgium	N. Howarth	Switzerland	E. Van Beek	United Kingdom
L. Bonomo	Italy	S. Ley	Germany	J. Verschakelen	Belgium
E. Coche	Belgium	M. Maffessanti	Italy	J. Vilar	Spain
S. Copley	United Kingdom	K. Malagari	Greece	P. Vock	Switzerland
P. Costello	USA	M. Mirka	Czech Republic	D. Wormanns	Germany
S. Desai	United Kingdom	N. Muller	Canada	J. Bogaert	Belgium
S. Diederich	Germany	A. Oikonomou	Canada	J. Ferda	Czech Republic
P. Eliáš	Czech Republic	S. Padley	UK	M. Gutberlet	Germany
S. Ellis	United Kingdom	J. Prior	USA	M. Heřman	Czech Republic
J. Ferda	Czech Republic	M. Prokop	Holland	Ch. Herzog	Germany
T. Franquet	Spain	R. Reinmüller	Austria	N. Kelekis	Greece
B. Ghaye	Belgium	M.P. Revel	France	J. Neuwirth	Czech Republic
F. Gleeson	United Kingdom	C. Schaefer-Prokop	Holland	M. Oudkerk	Holland
L. Goodman	USA	P. Schnyder	Switzerland	J. Schoepf	USA
P. Grenier	France	J. Schoepf	USA	R. Rienmüller	Austria
D. Hansell	United Kingdom	K. Steinke	Switzerland	J. Žižka	Czech Republic

Invited speakers for Joint Workshop

CALL FOR ABSTRACT

All participants are invited by ESTI Programme Committee to submit abstract on one of topics listed below. Please note that the programme is tentative and will be developed from received abstracts.

General abstract topics are following:

- 1) Interstitial Lung Disease
- 2) a) Lung cancer
b) Computer aided diagnosis/nodules
- 3) a) Intervention
b) Infection
c) New examination's techniques (e.g. CR, DR, double source CT, molecular imaging)
- 4) a) Cardiac Disease
b) Pulmonary Embolism
- 5) Miscellaneous

In order to standardise the abstract layout we ask you to read the preparation guidelines at this site carefully!!! Avoid submission within 48 hours of the deadline for best system performance.

GUIDELINES:

- 1) Abstract can be submitted only via internet on meeting page www.esti2006.org
- 2) Abstract submitted by fax, post or by email will not be accepted.
- 3) All abstract must be submitted and presented in English
- 4) Maximum 300 words (2050 characters including spaces, but excluding the title and the authors)
- 5) Meeting topics should be concise, related to the meeting topics and not previously presented or published. They must be publication-ready. No reformatting or retyping will be undertaken.
- 6) Avoid complex mathematical formulae, Greek letters and symbols. Instead of IFN- β use IFN-b or IFN-beta.
- 7) The Programme Committee will select abstract for oral and poster presentation.
- 8) Please structure your abstract using the following headings:
 - Objectives
 - Methods
 - Results
 - ConclusionAbstract should be informative and not just promise further investigations.
- 9) Although authors chosen for oral presentation may state their preference for inclusion in specific session the final decision will be made by the Programme Committee.
- 10) Authors are requested to select a topic under which they wish their abstract to be reviewed.
- 11) After having submitted your abstract you will receive a confirmation by email with the following information. (please make sure to state your correct email address)
 - Abstract reference number of your abstract (for correspondence and questions that may arise)
 - You can also edit already submitted abstract directly on symposium website using your ARN and email address
- 12) After Programme Committee evaluation all accepted abstract authors will be notified by email.

Correction to abstracts can only be made up to the deadline **of March 31, 2006**.

If you have difficulties in submitting your abstract or if you need any further information, please contact the Meeting Secretariat abstracts@esti2006.org or call +420 261 174 304.



EUROPEAN SOCIETY OF THORACIC IMAGING

14th Annual Meeting, Prague, June 9 – 11, 2006

GENERAL INFORMATION

Meeting Dates

14th Annual meeting of ESTI June 9–11, 2006

Joint workshop of ESTI/ESCR June 11–12, 2006

Meeting Venue

Diplomat** Prague hotel:**

The four-star Golden Tulip Diplomat Hotel is located on the very edge of Prague's historic centre, only 10 minutes from the city airport. Close to the Prague Castle it is surrounded mainly by diplomatic residences. It offers 398 standard to superior rooms and suites. Three floors have been arranged for non-smokers. Specially equipped rooms for the disabled are also available.

The spacious newly renovated Conference Centre with its sixteen rooms can accommodate up to 820 persons and provides state-of-the-art audio-visual technology, multimedia equipment and facilities for simultaneous interpreting. Other services include restaurants, hairdresser's, a newspaper & souvenir shop, an antique shop, a car and limousine rental, a car park service, a business centre, a fitness and health centre and a room service. The business centre is located on the 2nd floor. There are 16 types of rooms tailored for every client's requirements. All conference premises are fully air-conditioned.



<http://www.diplomatpraha.cz>

Venue Accessibility:

Prague Ruzyně International Airport is located approximately 20 km north-west of the city centre (30 min. by taxi). The airport is served either by taxi or public transport. The Diplomat hotel is located at the final station of the public bus No. 119 which goes from the airport.

From the Airport to the Diplomat hotel:

From the airport take the bus no.119 (which runs every 10-15 minutes) to Dejvická station – final station. The Diplomat hotel is situated there. By bus the journey takes approx. 30 min.

By taxi to the Diplomat hotel:

By taxi the Diplomat hotel is approx. 20 minutes away from the airport. The price for a taxi should not be higher than approx. 700 CZK (22 EUR). Credit cards are not accepted. Cash is the only means of payment. The airport is served either by airport taxis or by private taxis.

By train to the Diplomat hotel:

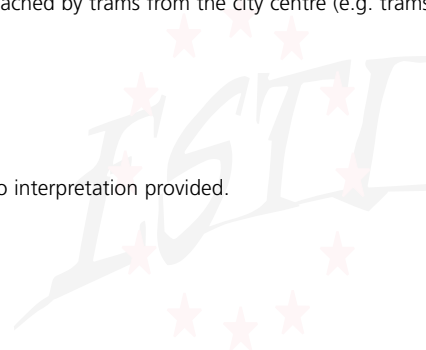
Most of the international trains arrive at the Main station – Hlavní Nádraží. From the Hlavní Nádraží station take metro line C to the station Muzeum than you have to change the line C for line A and the Diplomat hotel is situated at the terminate station Dejvická.

Travel from the city centre:

From Prague city centre (Wenceslas square) the Diplomat hotel can be reached by the subway. Take metro line A from the Muzeum station to the terminate station Dejvická. The Diplomat hotel is next the station. The Diplomat hotel can be also easily reached by trams from the city centre (e.g. trams No. 20, 26 or night tram No.51)

Official Meeting Language

Official meeting language is English, there will be no interpretation provided.





EUROPEAN SOCIETY OF THORACIC IMAGING

14th Annual Meeting, Prague, June 9 – 11, 2006

Sponsors and Exhibition

The organisers will gratefully acknowledge your participation to the Meeting as sponsors or exhibitor. There are plenty of possibilities for you to present your company or institute within our meeting. During a meeting an exhibition will be arranged. Companies from all over the world will be given ample opportunity to display their latest products, services and technical innovations. The exhibition will be located in the space in close proximity to the lecture halls. Please contact CZECH-IN s. r. o. if you are interested in participating as an exhibitor.

CZECH-IN s. r. o.

Prague Congress Centre

5. května 65

CZ – 140 21 Prague 4

Czech Republic

Phone: +420 261 174 304

Fax: +420 261 174 307

Email: esti@esti2006.org

Prague and Czech Republic

Prague:

Prague, the capital city of the Czech Republic, lies in the heart of Europe and ranks amongst the most impressive historical cities in the world. The city has always played an important part in the history of the nation, country and Europe. Prague is not only a centre of cultural movements dating back for centuries (Art from every period in history can be found here), it also exhibits a unique collection of historical monuments, dominated by Prague Castle. In 1992, the historical core of the city (866 hectares) was listed in the UNESCO World Cultural and Natural Heritage Register as a town with a unique and lively blend of Roman, Gothic, Renaissance, Baroque, Art Nouveau and Cubist architecture. Prague was one of nine European cities awarded the title European City of Culture in 2000. Prague has around 1.2 million inhabitants. For more information, visit the website www.pis.cz.

About Czech Republic

The Czech Republic is a small country in the heart of Europe, which has an appeal for visitors. Thanks to its location at the crossroads of various cultures, the Czech Republic has countless cultural and historical points of interest, these destinations attracted a relatively high number of foreign tourists even before the velvet revolution. The physical land area puts into a category of smaller countries. Aside from the Czechs: Moravians, Silesians, Slovaks, Germans, Polish, Gipsies and other nationalities also inhabit the culturally diverse country. The Czech Republic is a country of great historical and cultural importance, a country where historic monuments and entire towns have been included on the World Heritage List. Czech Republic also has good venues available for congress, cultural, market, incentive and spa tourism. Czech Republic has much to offer to tourists from all around the world. There is something for everyone here. Since May 1, 2004 Czech Republic has become a member of EU.

Time difference

The Czech Republic is in Central European Time Zone. Central European Time (CET) is 1 hour ahead of Greenwich Mean Time (GMT+1). After last Sunday in March the time in the Czech Republic is shifted back by 1 hour to Central European Time and this lasts until the end of September.

Weather

Temperature: Prague is a city with a mixture of oceanic and continental, average winter temperature is 5 degrees of Celsius, average summer temperature is 20 degrees of Celsius.

Annual precipitation: 500 – 700 mm. For actual weather goes to www.novinky.cz/pocasi.

Currency

The Czech currency is called the Czech crown. In circulation is in the form of banknotes of the following value: 5,000, 2,000, 1,000, 500, 200, 100 and 50 crowns and coins of the following value: 50, 20, 10, 5, 2, 1 crowns and 50 halers. Exchange offices and ATM machines are easily available throughout the town and at Prague International Airport. It is advisable to exchange money in banks rather than in the high street exchange offices. The approximate exchange rate as per January 2006: 1 € = 28,5 CZK. For actual course go to www.cnb.cz.



EUROPEAN SOCIETY OF THORACIC IMAGING

14th Annual Meeting, Prague, June 9 – 11, 2006

Prague Transportation

Metro

The Prague Metro network consists of 3 lines designated by letters and differentiated in colour: A – green colour (Skalka station – Dejvická station), B – yellow colour (Černý most station – Zličín station), C – red colour (Ládví station – Háje station), with transfers possible at Museum station (lines A and C), Můstek station (lines A and B), Florenc station (lines B and C). Metro operates daily from 5 a.m. to 12 p.m.

Trams

Daytime operation is from 4:30 a.m. to 24:00 a.m. Night time operation is from 0:30 a.m. to 4:30 a.m. and is provided by tram No. 51 to 58 with traffic intervals 30 minutes. The central transfer-station for night time lines is Lazarská stop. Tram schedules are located at individual stops.

Buses

The daytime and night time operation of buses is similar to tram operation. Night time service is provided by bus No. 501 to 514. Bus schedules are located at individual stops.

Taxi

When taking a taxi, be sure that the taxi is equipped with a permanently installed yellow roof lamp with the TAXI sign in black letters. The registration number, company name and price list including the base rate, rate per kilometre and one-minute-waiting rate must be displayed on both front doors of the cab. These prices

must correspond with the prices set on the meter in the cab. Customers are recommended to order a taxi with non-stop dispatching offices where the information on fares is available in advance.

Prague City Transport Fares

Travelling by city transport is only possible with a valid ticket. Passengers have to obtain their tickets before boarding the vehicle or entering the Metro system. The ticket is valid only if marked in the validation appliance.

Fares

Transfer ticket	20,- Kč
Discounted (children 6 to 15)	10,- Kč

- the ticket is valid for 75 minutes after marking. During off-peak hours, i. e. 8 p.m. to 5 a.m. on working days and all day Saturdays and Sundays ticket validity is lengthened to 90 min.

Nontransfer ticket	14,- Kč
Discounted (children 6 to 15)	7,- Kč

- in trams and buses a nontransfer ticket is valid for 20 minutes after marking and does not allow changing of lines. In the underground the nontransfer ticket is valid for 5 stations after marking (excluding the starting station) and allows transfers between the underground lines. Time validity of the nontransfer ticket in the underground is limited to 30 minutes.
- nontransfer tickets are not valid on night trams and buses and for the Petřín Funicular.

The prices may be increased during the year.

Visa

All foreign visitors to the Czech Republic must possess a passport valid for at least the next 3 months. Participants who require a visa should apply in advance to the consular offices of the Czech Republic or diplomatic mission in their country in order to avoid delays in travel arrangements to the meeting. Please note that the Visa application procedure can take up to 2 months. For more information about Visa requirements please join www.mzv.cz. For more information about Czech Republic please visit website www.czech.cz.

Restaurant – Czech cuisine

Czech cuisine is typical of Middle European gastronomy, yet clearly reflects a number of Czech elements – e.g. bread or fruit dumplings, various kind of soups, sauces, numerous potato dishes, cake and wide range of festive dishes. In general Czech gastronomy means roasted pork with dumplings and sauerkraut, potato pancakes, plum dumplings and bilberry cakes... and of course Czech drinks – primarily beer and first-rate wines from South Moravia, not to mention “Slivovice”, a clear Czech plum brandy and Becherovka a delicious herbal elixir.

Tiping: Services is almost always included in hotel and restaurant bills. A further tip of a few coins is appropriate. Some typical percentages for tipping are: restaurants ~ 5–10 % ...





REGISTRATION

Registration Guidelines

On-line registration:

All participants are given the opportunity to register for the meeting and social events via the official meeting website www.esti2006.org. Please follow the instructions on the website carefully. All participants are kindly recommended to register preferably via the **Online registration form**.

– Each on-line registering participant will receive a PRN – Participant Registering Number at the end of registering procedure to secure participant's identification. Please make your print out of your Registration Review where you will have your PRN.

– Alternatively please send the **Registration form** by fax or mail together with your payment to the Meeting secretariat in Prague. A text version of the Registration or Hotel Reservation Form can be downloaded from the meeting website.

– Each participant submitting the Registration form by fax or airmail will receive a PRN by email to include in details of payment. Please do not send any payment without PRN included in details of payment. Such payments cannot be identified. All participants registering **after May 20, 2006** are kindly requested to make all payments exclusively by credit card or to register on-site.

Registration fees (in Euro):

	Early until March 31, 2006	Late after March 31, 2006 + on-site	Including workshop (Early)	Including workshop (Late)
ESTI member	220 €	270 €	270 €	330 €
Nonmember	300 €	350 €	400 €	450 €
Radiologist in training*	100 €	150 €	170 €	230 €
One day registration**	150 €	200 €	X	X
Only workshop	170 €	230 €	X	X
Accompanying person	100 €	120 €	X	X
Accompanying person + conference dinner	150 €	170 €	X	X

**!!! If your payment is not received before March 31, 2006
the late fee will automatically be charged !!!**

* Have to proof their status by the written and stamped confirmation from the supervisor doctor (head of department) can not be older than 35 years old. Radiologist in training fee does not include the conference dinner. Radiologist in training will be given opportunity to buy it on-site for 50 € following up on actual possibilities.

** Conference dinner is not included. Participants will be given opportunity to buy it on-site for 50 € following up on actual possibilities.

What's included ?:

• The **registration fee** for participants includes:

Admission to all parts of the meeting

Congress bag

Final Programme

Abstract book

Dailly coffebreaks

and conference dinner.

– **Lunches are not included** but participants are given opportunity to order lunch boxes in advance for all meeting and workshop days for 10 €.

– Transportation is not included and also not provided.

• **Accompanying persons fee** includes:

Dailly coffebreaks

Tour for accompanying persons (Jewish town: June 9, 2006 11:00 – 15:00)

as well as access to the commercial exhibition.

– **Lunches are not included**, but participants are given opportunity to order lunch boxes in advance for all meeting days for 10 €.

On-site registration:

The registration desk in the Diplomat hotel will be open during opening hours. Onsite registration will be accepted but can not be guaranteed to receive all congress documents. Please arrive early if you wish to register on-site.



EUROPEAN SOCIETY OF THORACIC IMAGING

14th Annual Meeting, Prague, June 9 – 11, 2006

All documents regarding registration – registration pack (congress bag, personal name badge, abstract book, final programme) will be handed out to registered participants during the following opening hours:

June 8, 2006:	16:00 – 20:00
June 9, 2006:	7:00 – 18:00
June 10, 2006:	7:00 – 18:00
June 11, 2006:	7:00 – 12:00

Confirmation:

Upon receipt of the correct registration fee, each participant will receive a confirmation of registration. Please bring this confirmation to the registration desk as a proof of your registration. Confirmation will be send upon receipt of payment.

Payment / Cancellation condittions:

All fees for the meeting registration and social events should be paid in EURO, free of all bank charges – clearly stating the participant's name and PRN.

By bank transfer:

Beneficiary: CZECH-IN s. r. o.

Bank name: KOMERČNÍ BANKA a. s.

Bank address: Na Příkopě 33, 114 07 Prague 1, Czech Republic

Account No.: 51-0903490207/0100

IBAN No.: CZ5901000000510903490207

BIC Code: KOMBCZPPXXX

Details of payment: PRN – Participant Registering number

By credit card:

Please note that we only accept VISA, Eurocard/Mastercard

!!! Cheques will not be accepted !!!

Refund policy/ Cancellation:

Refund of registration fee, less **30%** administrative charges, can be applied for in writing until **May 1, 2006** to the Meeting Secretariat in Prague/Czech Republic. After this date no refund will be possible. Registrants may transfer their registration to a colleague at any time. For any changes of name a fee of 30 € will be charged.

All registrations received at a Meeting Secretariat CZECH-IN, by **May 31, 2006** will be included in the list of participants.

Responsibility:

The participant acknowledges that he/she has no right to lodge damage claims against organisers should the holding of the meeting be hindered or prevented by unexpected political or economic events or generally by force majeure, or should the non-appearance of speakers or other reasons necessitate programme changes. With registration the participant accept this proviso.





EUROPEAN SOCIETY OF THORACIC IMAGING

14th Annual Meeting, Prague, June 9 – 11, 2006

ACCOMMODATION

OFFICIAL HOUSING AGENT:

CZECH-IN has been appointed the official housing agent for the 14th ESTI meeting. Number of rooms has been reserved in Prague's hotels in the several categories at special rates.

LIST OF HOTELS

1. Diplomat hotel Prague****
2. Krystal hotel***
3. Masaryk Dorms***

Diplomat Hotel****Prague

Address: Evropská 15, 160 41 Prague 6, Czech Republic

Phone: +420 295 559 111, +420 296 559 215

E-mail: info@diplomathotel.cz



Location:

Diplomat hotel is located on the very edge of Prague's historic centre. It takes only 10 minutes to get there from the City Airport. Close to the Prague Castle, it is surrounded mainly by diplomatic residences. There are 398 standard/superior rooms and suites.

Connection

International Airport (primary)

Praha Ruzyně - code PRGDistance 8 km

Ground transportation

Underground – Dejvická Station – Line ADistance 0.05 km

Tram – Dejvická StopDistance 0.01 km

Bus – Dejvická StopDistance 0.05 km

Railway – Holešovické nádraží StationDistance 6 km

Railway – Hlavní nádraží StationDistance 6 km

Points of Interest

Prague CastleDistance 1.5 km

Old Town SquareDistance 4 km

Jewish TownDistance 4 km

Lesser TownDistance 3 km

Charles BridgeDistance 3 km

Krystal hotel***

Address: J. Mártího 2/407, 162 00 Prague 6 , Czech Republic
Phone: +420 220 563 411, Fax: +420 220 561 627
E-mail: krystal@cdms-krystal.cz



The Centre of Post-Graduate and Management Studies is designed to serve Charles University, the Czech Technical University and the Prague school of Economics as an accommodation, conference, and teaching centre. It has been the venue of a number of international congresses, conferences, symposia and management courses, and its premises have hosted courses run by the Institute of Life-Time Education and Retraining as well as post-graduate studies. Residential quarters consist of 764 beds in double rooms, each with its own bathroom. A stylish restaurant and the Lobby bar provide pleasant surroundings for meals and social contacts. Meals are served in a dining room with 160 seats. Covered as well as outdoor parking for 100 cars are also available.

Connection

Underground & Tram: It is situated 8 station from Dejvicka station by tram – No. 20, 26
Airport: Take a bus No. 119 station hotel Diplomat and change a bus for a tram 20, 26 it is 8th station.

Masaryk Dorms:

Address: Thákurova 1, 160 41 Prague 6, Czech Republic
Phone: +420 233 051 111, +420 233 051 237
E-mail: recepcemk@suz.cvut.cz



Masaryk Dorms is newly reconstructed building from parts exploited like college and from parts like hotel (We have reserved a hotel part for you). It's placed near the historical centre of Prague with unexceptionable connection to the airport. For clients it offers wide selection of gourmet, congressional and hotel services. Capacity of hotel parts is 36 rooms in division: 12 single rooms, 20 double rooms, 4 apartments. Guest rooms are equipped with a separate bathroom with shower bath and WC, radio, phone and television with satellite programs.

Connection

Underground & Tram: line A, station "Dejvická" and one station by tram. No. 26.
to the station „Thákurova“
Airport: take a bus No. 119, station hotel "Diplomat" and walk 5 min.



EUROPEAN SOCIETY OF THORACIC IMAGING

14th Annual Meeting, Prague, June 9 – 11, 2006

HOTEL RATES

All rates are in Euro, per room/ night including breakfast, services and taxes.

HOTEL	SINGLE ROOM	DOUBLE ROOM	DISTANCE FROM VENUE
DIPLOMAT HOTEL			venue
Early – before March 8, 2006	130 €	130 €	
Late –after March 8, 2006	150 €	150 €	
KRYSTAL***HOTEL	49 €	65 €	8 tram stops
MASARYK DORMS	69 €	69 €	walking distance, next to the venue

ACCOMMODATION GUIDELINES

Diplomat hotel – on-line booking/Hotel reservation form booking:

Please follow the instructions on the internet. Participants can book their room in the Diplomat hotel via internet www.esti2006.org. Each participant will receive a confirmation after reservation is submitted with the credit card details guarantee. **After May 1, 2006** accommodation is subject to availability and cannot be guaranteed. In case that you have no internet access you can also use a Diplomat hotel reservation form which can be downloaded from the website www.esti2006.org or use the enclosed one.

Krystal hotel/Masaryk Dorms booking – Hotel reservation form:

For reservation of the Krystal hotel or Masaryk Dorms please use enclosed Hotel Reservation Form or you can download it from the website. There will be no online hotel booking opened for Krystal and Masaryk. To guarantee the **reservation full prepayment is obligatory**. Regarding the payment please follow the undermentioned instructions. Each participant will receive a confirmation. **After May 1, 2006** accommodation is subject to availability and can not be guaranteed.

General terms and conditions:

The deadline for the hotel reservation is **May 1, 2006**. Hotels will be allocated on a first-come, first-served basis. Thereafter rooms and rates are subject to availability. Rooms availability can not be guaranteed after this date, although CZECH-IN will make every effort to meet the participants requirements.

Confirmation:

Each participant will receive a written confirmation of their reservation in case of hotel Diplomat directly from the hotel after reservation is submitted with the credit card details guarantee. And in case of Krystal hotel and Masaryk dorms directly from Meeting secretariat CZECH-IN. Final invoice will be issued by hotel in case of Diplomat hotel in case of Krystal hotel and Masaryk Dorms by CZECH-IN.

Late/Delayed Arrival

Check-in varies from noon until 14:00. Should you want to check into your room earlier, it is recommended to reserve a previous night as well. Check out is at noon. Late check-out is subject to the room availability and some hotels may charge a day rate.

Payment/Cancellation conditions:

Cancellation/changes must be made in writing (email or fax) to CZECH-IN. For hotel reservation cancelled before **May 1, 2006** the full deposit / amount will be refunded less € 50,- handling fee. After no refund will be made. If you arrived later or leave earlier than on the dates indicated in your reservation, the total accommodation amount will be charged and no refunds will be made. Change of reservation will be subject to a handling fee 20 €.

Any changes or cancellations of the reservation must be announced in advance in writing to:

In case of Diplomat hotel:

Directly to the hotel Diplomat: at email: h.stolickova@diplomathotel.cz,
fax: +420 296 559 226. Tel. +420 296 559 213.

In case of hotels Krystal and Masaryk Dorms to:

Meeting Secretariat
CZECH-IN s. r. o.
Prague Congress Centre
5. května 65
CZ – 140 21 Prague 4
Czech Republic
Phone: +420 261 174 304, Fax: +420 261 174 307
E-mail: accommodation@esti2006.org





EUROPEAN SOCIETY OF THORACIC IMAGING

14th Annual Meeting, Prague, June 9 – 11, 2006

By bank transfer:

In case of Diplomat hotel to...

Beneficiary: DIPLOMAT Hotel

Bank account number: 5092240011/2700 – EUR,

5092240003/2700 – CZK and others

Bank name: HVB Bank Czech Republic a.s./Hypo Vereinsbank

Bank address: Nám. Republiky 3a, n. 2090, 110 00 Praha 1

Details of payment: ESTI 2006 + delegate's name and amount transferred

In case of hotels Krystal and Masaryk Dorms full prepayment is obligatory to...

Beneficiary: CZECH-IN s. r. o.

Bank name: KOMERČNÍ BANKA a.s.

Bank address: Na Příkopě 33, 114 07 Prague 1, Czech Republic

Account No.: 51-0903490207/0100

IBAN No.: CZ59010000000510903490207

BIC Code: KOMBCZPPXXX

Details of payment: PRN (participant registration number)

Please note that bank transfer will be accepted only until 20 May, 2006. Please forward a copy of the transfer stating the participants name. Make sure that full payment is received by CZECH-IN free of all bank charges.

By credit card:

In case of Diplomat hotel:

Credit card details guarantee is obligatory

In case of hotels Krystal and Masaryk Dorms:

Please note that we only accept VISA, Eurocard/Mastercard

!!! Cheques will not be accepted!!!

For further information as well as for group reservation please contact:

CZECH-IN s. r. o.
Prague Congress Centre
5. května 65
CZ – 140 21 Prague 4
Czech Republic
Phone: +420 261 174 304
Fax: +420 261 174 307
E-mail: accommodation@esti2006.org

Youth hostel accommodation:

If you are interested in information about your hostel accommodation please go to www.hostel.cz





EUROPEAN SOCIETY OF THORACIC IMAGING

14th Annual Meeting, Prague, June 9 – 11, 2006

SOCIAL PROGRAMME

CONFERENCE DINNER:

June 9, 2006 – 20:00: Jazz boat

Meeting participants are welcome to enjoy the evening that offers the opportunity to explore enchanted Prague from the deck of the Jazz boat. The river cruise will allow you to discover some of the city's major monuments and sights, such as the National Theatre, Prague Castle and Charles Bridge. Great food, drinks and Jazz music included. Entertainment guaranteed!



Price:

Delegates — Included in the registration fee.

Accompanying persons – 50 €.

Reserve your ticket soon, number of places limited.

Radiologists in training – 50 € (will be available onsite ONLY as per occupancy)

Transportation from the hotel Diplomat to the boat departure station will not be provided.

WORKSHOP CONCERT:

June 11, 2006:

For participant of Joint workshop of ESTI and ESCR will be organised a rock/pop concert in one of the Prague clubs. Everyone is sincerely invited to relax over listening and dancing and to enjoy a music of a Motol hospital musician group.

GUIDED TOURS

A number of interesting guided tours have been prepared for all delegates and accompanying persons. Please find the respective schedules and short description below. All participants are kindly ask to meet at the registration area in the Diplomat hotel at the scheduled times with exception of the evening events and post-congress tours. The organiser reserves the right to cancel any tour in case there are less than 15 registered persons. On-site request for guided tours are welcome but can not be guaranteed.

GRAND TOUR OF PRAGUE:

This insightful historical tour lets you enjoy the city's most famous sights. Starting at The Prague castle, follows the "Royal Route", winding down to the Lesser Town and pitoresque Kampa island, you will cross the Charles bridge and continue to discover remarkable monuments of the Old town area.



Price: 37€

The price includes A/R coach transportation. English speaking guide and entrance fees.

Dates: June 9, 2006 11:00

June 10, 2006 13:00

Duration 4 hours

JEWISH TOWN: (Tour for accompanying persons)

You will discover an astonishing history of the Jewish community in Prague. Which can be traced back to the middle of the 10th century. Miraculously many outstanding documents have remained intact through the WWII. The visit includes the Old Jewish cemetery, the main synagogues (Old-New Synagogue...) as well as the Jewish Museum that stores a heartbreaking collection of children's art from the Nazi concentration camp – Terezin.



Price: 43 €

The price includes A/R coach transportation. English speaking guide and entrance fees.

Dates: June 9, 2006 11:00

Duration 4 hours



EUROPEAN SOCIETY OF THORACIC IMAGING

14th Annual Meeting, Prague, June 9 – 11, 2006

DON GIOVANNI: NATIONAL THEATRE OF MARIONETTE

Unique marionette theatre in Art deco style presents it's most famous performance Don Giovanni by Mozart. Mozart compounded his opera for Prague and he also conducted world premier of Don Giovanni in Prague... In case of interest we are able to reserve tickets for you... Just add your preferred date to the registration form... Programme of performances is to be announced...

POST MEETING TOUR:

We have arranged for you not only a Prague sight-seeing tours but also other tours for people who are interested in Czech Republic nature and history but also for people who would like to relax a little after the meeting.

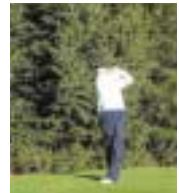
GOLF TOUR:

We would like to offer a possibility of golfing for a sport lovers in one of the most prestigious golf courses in the Czech Republic.

Price: € 210

Date: June 11, 2006 13:00

June 12, 2006 13:00



The price includes 18/9 holes game, golf equipment if required, lunch and A/R coach transportation and English speaking guide.

SPA TRIANGLE:

During this trip you will visit a Karlovy Vary region, which is the westernmost part of Czech Lands. Though small in size, this region abounds in scenic beauties and its importance eclipses that of other parts of the country. You will visit the most famous sights in each spa and taste as many curative springs as your body will allow.

Price: dbl. room 447 €/person

sgl. room 479 €/person

Date: June 11–13, 2006



Karlovy Vary + Bečov nad Teplou:

It is the largest spa town in the country and was established by Czech king and Roman emperor Charles IV in 1358. Among it's dominant features there are numerous colonnades which serve as a popular leisure time destination for tourists as well as spa clients. There is 12 warm mineral springs, but their curative properties work wonders that are difficult to believe. The town apart from it's romantic architectural monuments, art galleries and colonnades, offers many opportunities to sport lovers. The town won it's praise for other well-known products: The Moser glass, typical waffles, Mattoni mineral water and Becherovka liquor. The town is also a place where the famous International film festival take place.

Františkovy Lázně:

Is the smallest spa resort of the so-called west Bohemian spa triangle. It's charm is given by the unified Classicist architecture of spa houses and pavilions. 23 healing mineral springs of excelent quality, sulphur-ferric peat and hot-gas springs have all been used for the treatment of vascular diseases, heart and gynaecological disorders since the discovery of their healing properties.

Mariánské Lázně:

Is the second biggest spa town: it is well-know due to it' s excellent treatment results and a high quality of the local water sources. A real architectural jewel is the Colonnade built in 1889.





EUROPEAN SOCIETY OF THORACIC IMAGING

14th Annual Meeting, Prague, June 9 – 11, 2006

ČESKÝ KRUMLOV + SOUTH BOHEMIA CASTLES:

During our trip we will visit South Bohemia a region in which age-old historical monuments blend with the grandeur of the Šumava forest and the romance of pitoresque south Bohemian lakes and ponds. The region is virtually interwoven with scenic beauties, castles, chateaux, fortresses, churches, historical towns and villages, all bearing evidence to the supreme workmanship of our ancestors as well as the care the present inhabitant of Southern Bohemia devote to the achievements past and present.

Price: dbl. room 463 €/person

sgl. room 515 €/person

Date: June 12–14, 2006

Český Krumlov:

The town is situated in a pitoresque environment on the meandering river Vltava and is one of the most beautiful and architecturally best preserved towns in Czech Republic. This unique historical complex, consisting of more than 300 Gothic and Renaissance buildings boasts an unusually well preserved medieval urban composition. Because of it's unique character, the town was entered in 1992 in the UNESCO List of World Cultural and Natural Heritage.



Rožmberk:

There are only a few castles in Bohemia, which can be compared with Rožmberk with its beautiful location and medieval character

Hluboká nad Vltavou:

This grand residence of the Schwarzenberg princes is the most valuable example of romantic Historicism in Czech chateau architecture

Červená Lhota:

This touristically attractive chateau, which took it's name from the colour of it's facade, is located on an island amid a man-made lake. The chateau interior, full of valuable art collections and furniture, has been preserved to this day.



BOOKING CONDITIONS:

The reservation is guaranteed only in the case that full payment is received in advance. Cancellation and /or changes must be made in writing to CZECH-IN. No refund will be provided if the cancellation or change is forwarded less than 1 week before the meeting start.

If you require further information on any of the above tours, please contact:

CZECH-IN s r.o.

5. května 65

CZ – 140 21 Prague 4

Czech Republic

Tel: +420 261 174 304

Fax: +420 261 174 307

E-mail: info@esti2006.org





EUROPEAN SOCIETY OF THORACIC IMAGING

14th Annual Meeting, Prague, June 9 – 11, 2006

JOINT WORKSHOP ESTI/ESCR – 11/12 JUNE 2006, PRAGUE

"Basics of cardiac imaging by CT and MR"

General Information

We have the pleasure to announce the first ESTI and ESCR Joint workshop „*Basics of cardiac imaging by CT and MR*“. For the first time ESTI and ESCR join together to discuss the latest developments within the enormous progress made in the field of imaging technologies. This major Joint workshop is organised as a postconference workshop after the 14th ESTI annual meeting.

Workshop days

June 11 - 12, 2006

Venue

Diplomat hotel Prague

Registration to the workshop should be made as follows

Please use preferably the on-line Registration form where you can register as a participant of the meeting and workshop as well as a participant of the workshop only. Alternatively you can send/fax the filled out registration form to the Meeting secretariat CZECH-IN.

IMPORTANT CONTACTS:

ESCR office

Prof. M. Oudkerk
Neutorgasse 9/2a
AT-1010 Vienna, Austria
Phone: +43 1 535 50 93
Fax: +43 1 535 50 93 445
E-mail: office@escr.org
www.escr.org

Workshop secretariat

Lukáš Mareček
Project manager CZECH-IN s.r.o.
Prague Congress Centre
5. května 65
CZ – 140 21 Prague 4
Czech Republic
Phone: +420 261 174 304
Fax: +420 261 174 307
E-mail: info@esti2006.org

Scientific Programme

Sunday June 11, 2006

14:00 – 15:30 **Cardiac and Coronary Anatomy and Physiology**

3 x 30 minutes

J. Bogaert: Cardiac anatomy in all modalities

Ch. Herzog: Coronary anatomy

R. Rienmüller: Physiology

15:30 – 16:00 **Coffee**

16:00 – 18:00 **Optimisation and Standards of Cardiac Imaging (MR, MDCT)**

2 x 45 minutes

M. Gutberlet: CT

Ch. Herzog: MRI

Monday June 12, 2006

08:00 – 10:00 **Cardiac Pathology I: Non-ischemic Myocardial Diseases, Valvular Disease**

3 x 40 minutes

M. Gutberlet: Congenital heart disease

M. Gutberlet: Cardiomyopathy

N. Kelekis: Valvular disease MR

10:00 – 10:30 **Coffee**

10:30 – 12:00 **Cardiac Pathology II: Coronary Atherosclerosis, Ischemic Heart Disease**

3 x 30 minutes

Ch. Herzog: Coronary calcifications

M. Oudkerk: Coronary stenosis

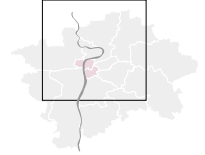
J. Schoepf: Acute chest pain

12:00 – 13:00 **Lunch**

13:00 – 15:00 **Case Analysis, Clinical Reporting, Communication with Cardiologists**

R. Rienmüller, J. Neuwirth, J. Ferda, J. Žižka, M. Heřman

PRAHA



Prague Castle

1 Diplomat Hotel – Conference Venue



Subway

2 Krystal Hotel

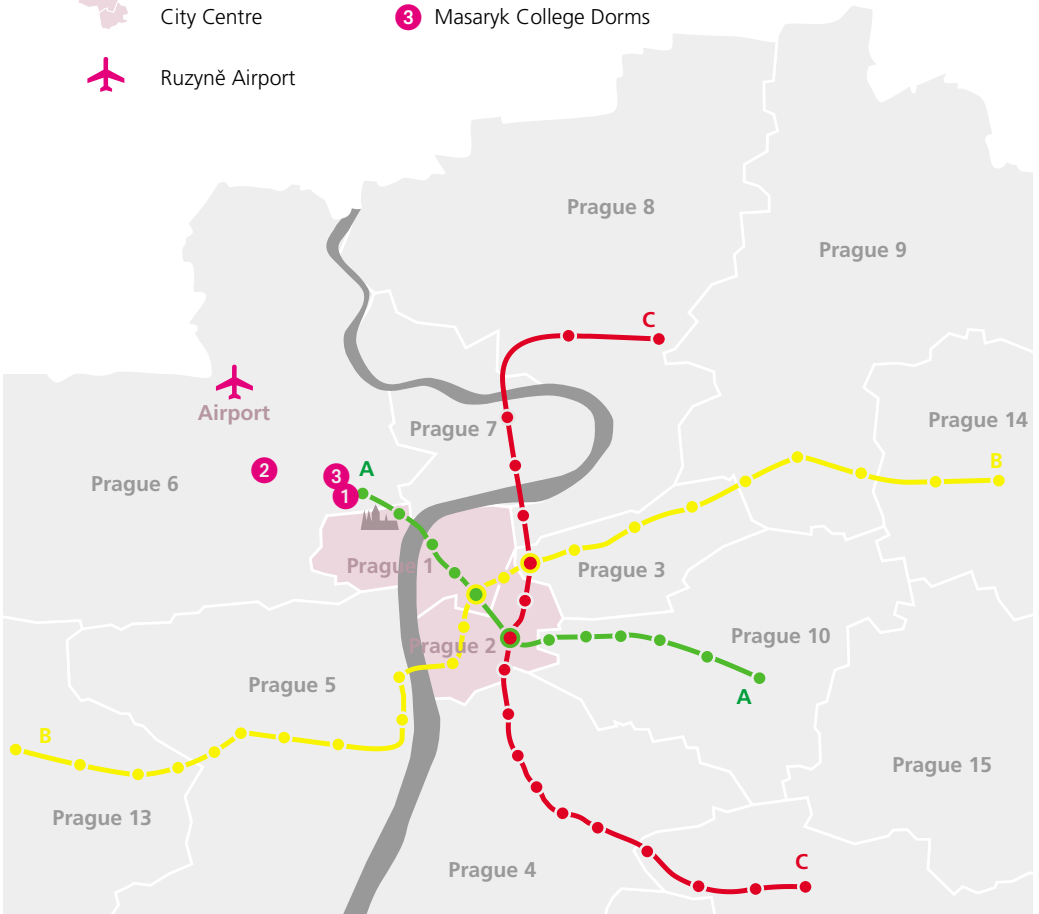


City Centre

3 Masaryk College Dorms



Ruzyně Airport



NOTES



Experience. Leadership. Vision

Trusted experience in MRI contrast media.



Growing this modality with

- Magnevist®
- Gadovist®
- Resovist®

Proven leadership in MRI contrast media.



Expanding MRI with new approaches

- Primovist®
- Vasovist®
- Gadomer

Profound vision in MRI contrast media.



Aiming at bridging diagnosis and therapy

- Disease targeted imaging
- Imaging at molecular level
- Exploration of new imaging modalities

